

# EL PINON 1947



WINTON & ASSOCIATES  
ACCENT SERIES HOMES

1947 SQFT. – 4 BEDROOMS – 2.5 BATHROOMS – 2 CAR GARAGE



## FRONT ELEVATION

*Build your dream home...*



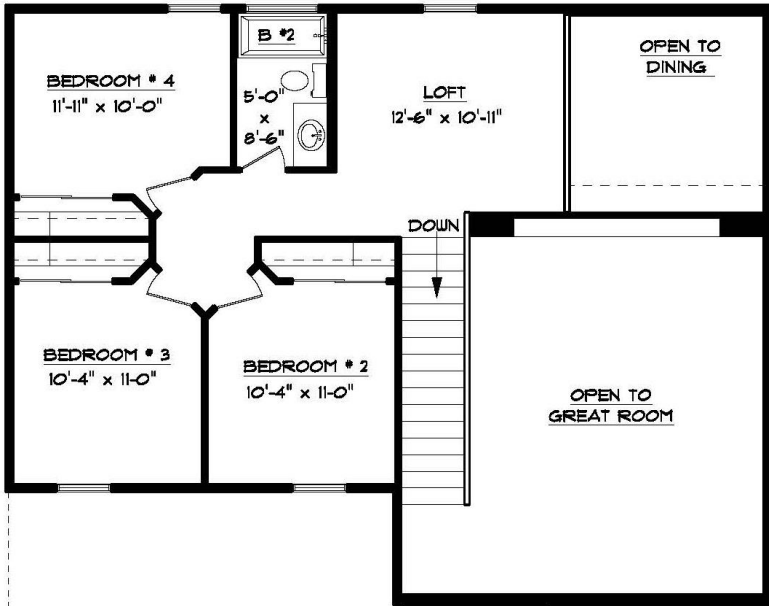
•6300 Escondido Dr. El Paso, TX 79912 •PH: (915) 584-8629 •FX: (915) 225-0087  
ELPASOACCENTHOMES.COM

# EL PINON 1947

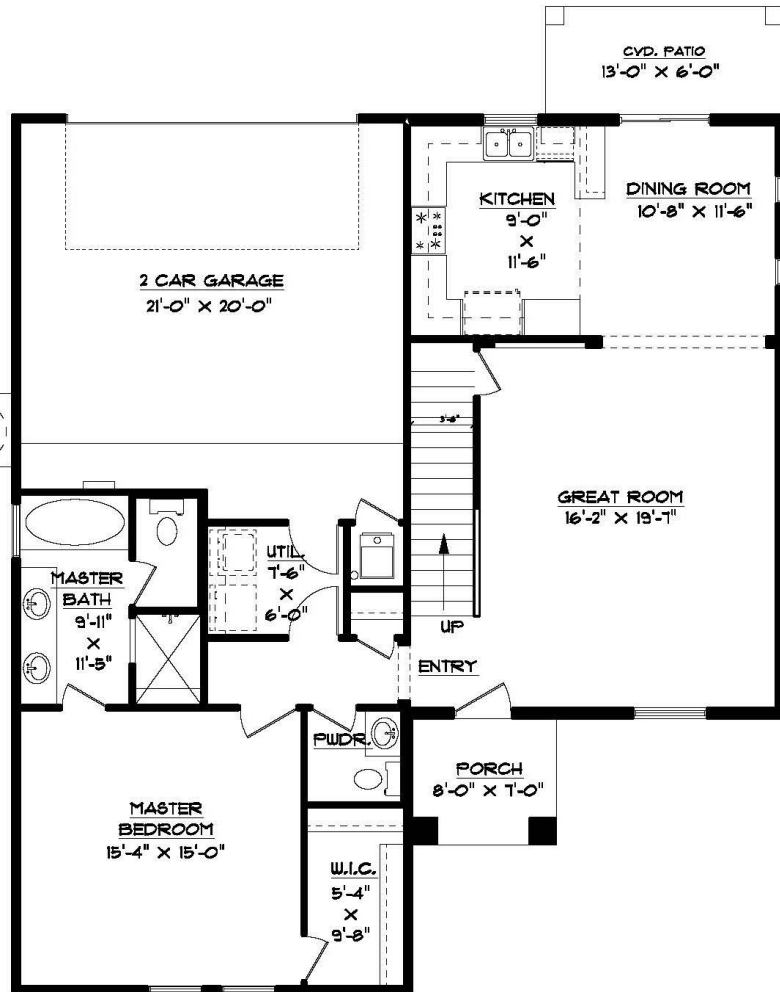


WINTON & ASSOCIATES  
ACCENT SERIES HOMES

1947 SQFT. – 4 BEDROOMS – 2.5 BATHROOMS – 2 CAR GARAGE



SECOND FLOOR PLAN



FIRST FLOOR PLAN

42'-0" X 41'-7 1/2"

\*Floor Plan, Amenities, Price and Availability are subject to change without notice\*



•6300 Escondido Dr. El Paso, TX 79912 •PH: (915) 584-8629 •FX: (915) 225-0087  
ELPASOACCENTHOMES.COM



# Energy Star Certified EFFICIENCY, COMFORT AND HEALTH



ALL ACCENT HOMES ARE DESIGNED AND BUILT WITH HIGH LEVELS OF ENERGY EFFICIENCY TO MEET AND EXCEED ENERGY STAR PROGRAM STANDARDS.

We not only build your dream home...  
we build a cost-effective, healthy home  
suited for any climate and the comfort  
for you and your loved ones...

*Jack Winton*



WINTON & ASSOCIATES  
ACCENT SERIES HOMES

\*WE GUARRANTY HEATING & COOLING PERFORMANCE OF EACH HOME