

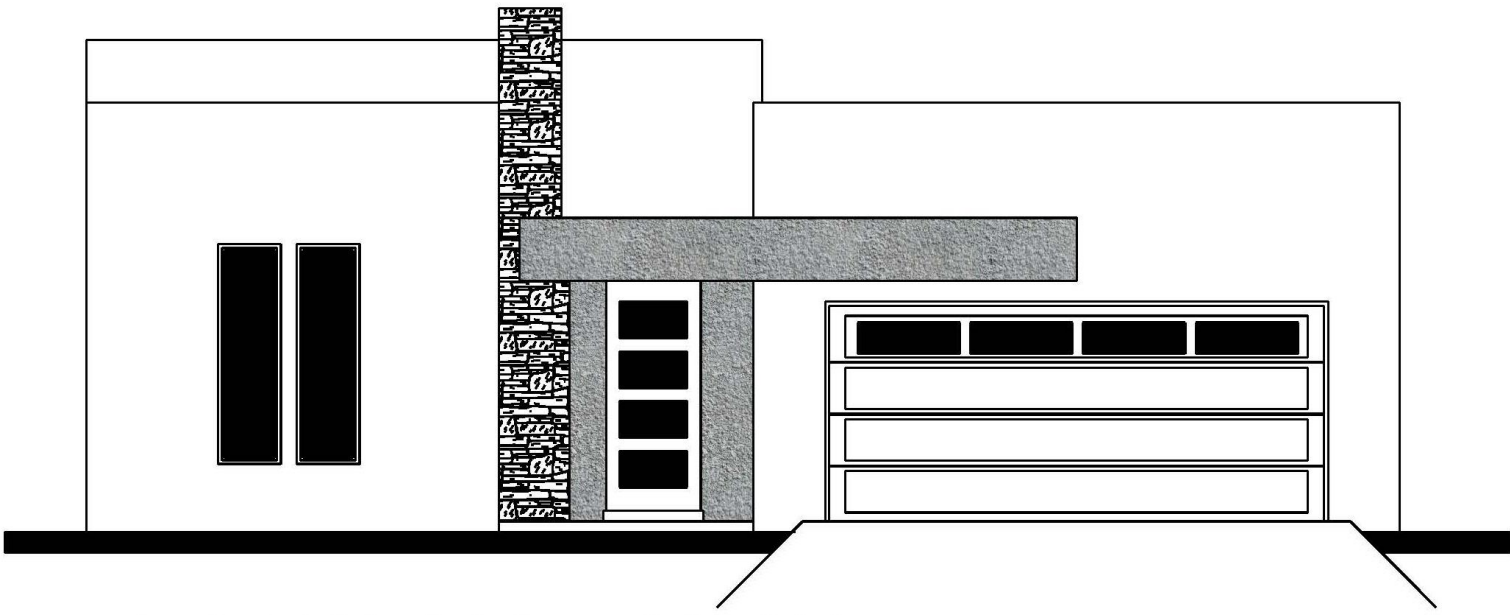
# THE COTTONWOOD C

7857 ENCHANTED CLIFF



WINTON & ASSOCIATES  
QUALITY BUILT. LUXURY DESIGNED HOMES.

2186 SQFT. – 4 BEDROOMS – 2.5 BATHROOMS – 2 CAR GARAGE



FRONT ELEVATION

*Build your dream home...*



•6300 Escondido Dr. El Paso, TX 79912 •PH: (915) 584-8629 •FX: (915) 225-0087  
WINTONHOMES.COM

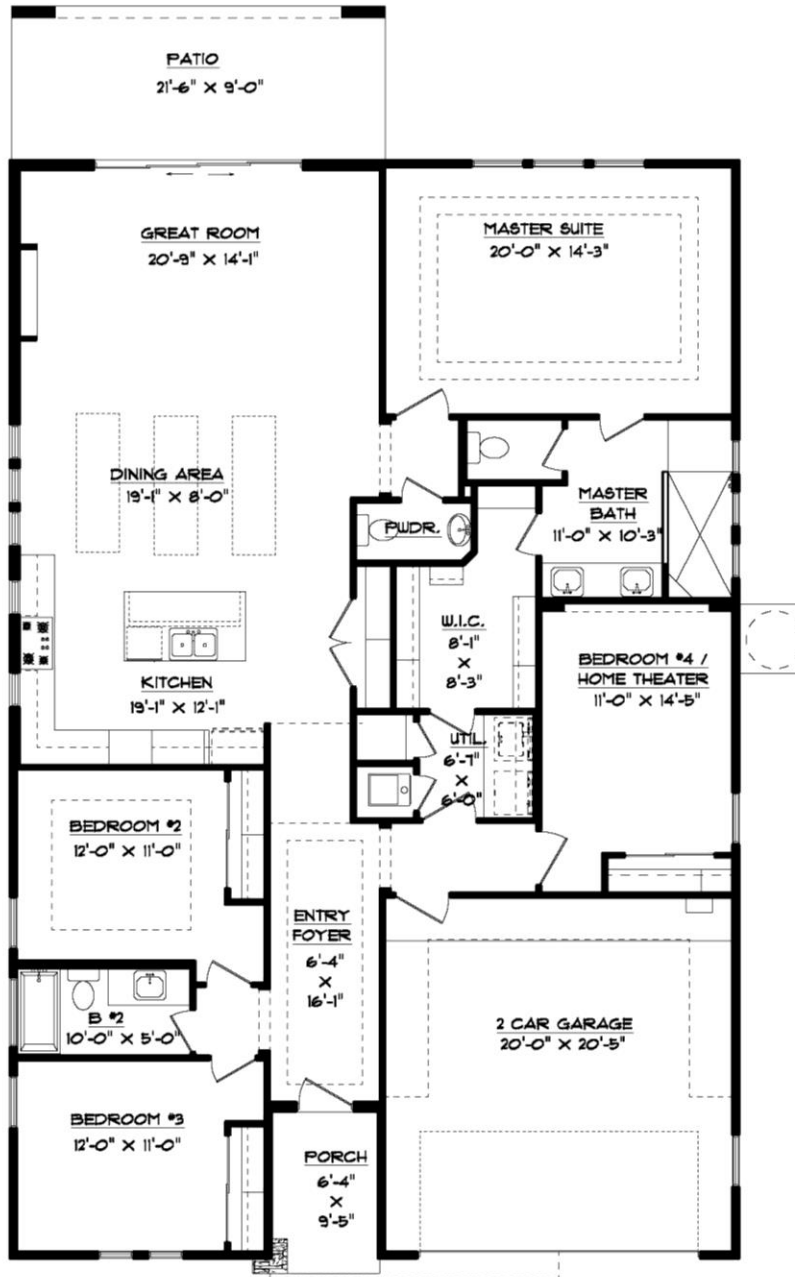
# THE COTTONWOOD C



WINTON & ASSOCIATES  
QUALITY BUILT. LUXURY DESIGNED HOMES.

7857 ENCHANTED CLIFF

2186 SQFT. – 4 BEDROOMS – 2.5 BATHROOMS – 2 CAR GARAGE



## FLOOR PLAN

41'-9 1/2" X 63'-2"

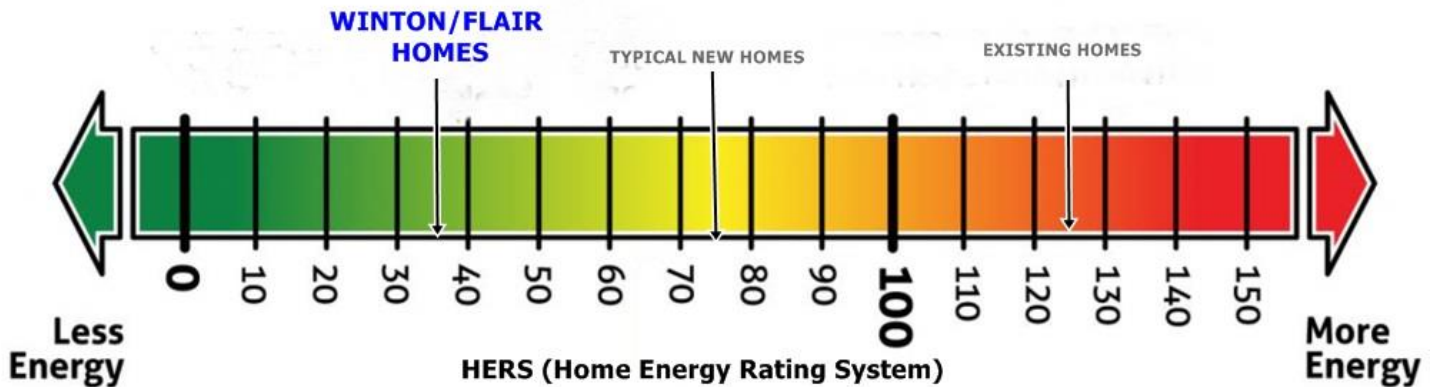
\*Floor Plan, Amenities, Price and Availability are subject to change without notice\*



•6300 Escondido Dr. El Paso, TX 79912 •PH: (915) 584-8629 •FX: (915) 225-0087  
WINTONHOMES.COM



# Energy Star Certified EFFICIENCY, COMFORT AND HEALTH



ALL ACCENT HOMES ARE DESIGNED AND BUILT WITH HIGH LEVELS OF ENERGY EFFICIENCY TO MEET AND EXCEED ENERGY STAR PROGRAM STANDARDS.

We not only build your dream home...  
we build a cost-effective, healthy home  
suited for any climate and the comfort  
for you and your loved ones...

*Jack Winton*



WINTON & ASSOCIATES  
QUALITY BUILT. LUXURY DESIGNED HOMES.

\*WE GUARRANTY HEATING & COOLING PERFORMANCE OF EACH HOME