

THE AVILA F

704 SOMBRERO CT.



1442 SQFT. – 4 BEDROOMS – 2.5 BATHROOMS – 2 CAR GARAGE



Build your dream home...

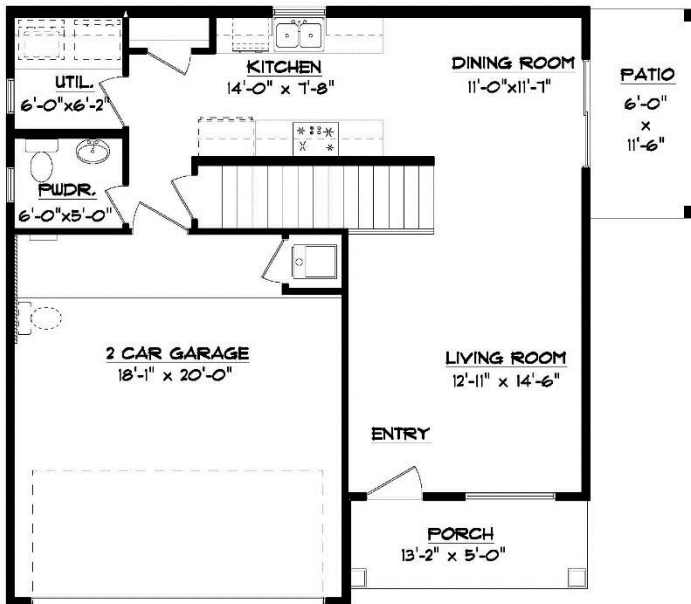


•6300 Escondido Dr. El Paso, TX 79912 •PH: (915) 584-8629 •FX: (915) 225-0087
WINTONHOMES.COM

THE AVILA F

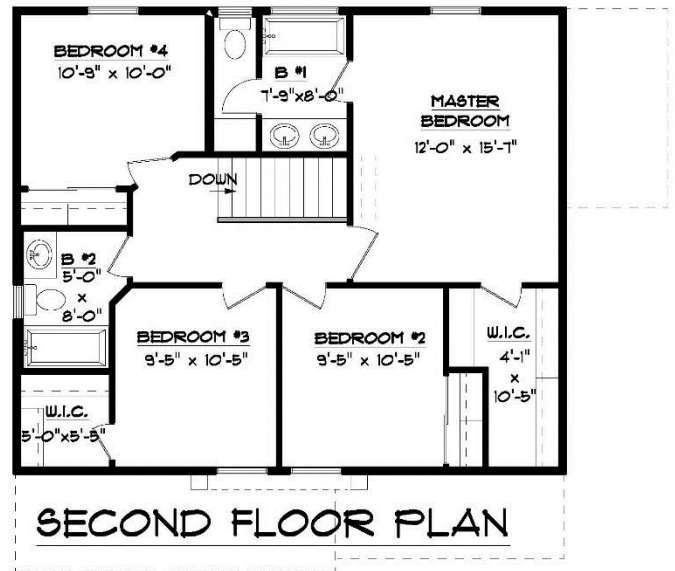
704 SOMBRERO CT.

1442 SQFT. – 4 BEDROOMS – 2.5 BATHROOMS – 2 CAR GARAGE



FIRST FLOOR PLAN

31'-10 1/2" x 32'-8"



SECOND FLOOR PLAN

Floor Plan, Amenities, Price and Availability are subject to change without notice



•6300 Escondido Dr. El Paso, TX 79912 •PH: (915) 584-8629 •FX: (915) 225-0087
WINTONHOMES.COM



Energy Star Certified EFFICIENCY, COMFORT AND HEALTH



ALL ACCENT HOMES ARE DESIGNED AND BUILT WITH HIGH LEVELS OF ENERGY EFFICIENCY TO MEET AND EXCEED ENERGY STAR PROGRAM STANDARDS.

We not only build your dream home...
we build a cost-effective, healthy home
suited for any climate and the comfort
for you and your loved ones...

Jack Winton



*WE GUARRANTY HEATING & COOLING PERFORMANCE OF EACH HOME