

THE AVILLA II S

703 SOMBRERO CT.



1630 SQFT. – 4 BEDROOMS – 2.5 BATHROOMS – 2 CAR GARAGE



Build your dream home...

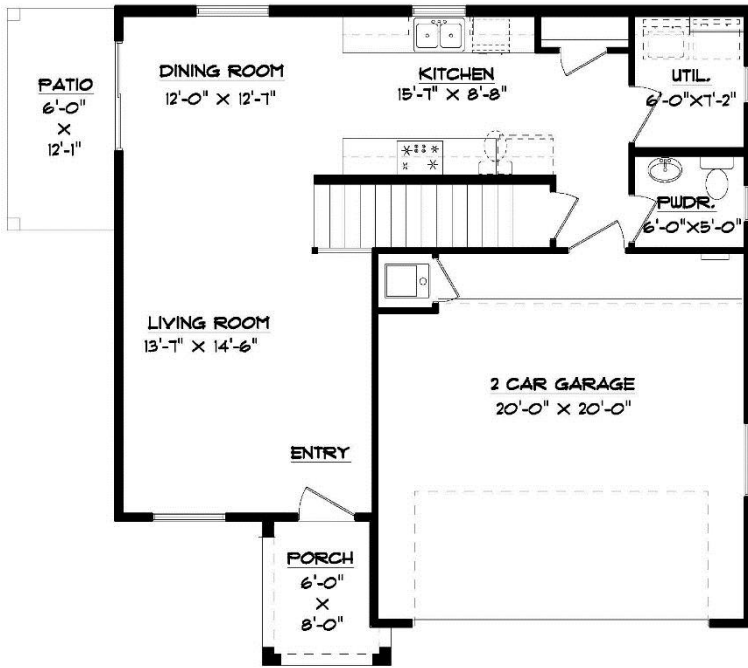


•6300 Escondido Dr. El Paso, TX 79912 •PH: (915) 584-8629 •FX: (915) 225-0087
WINTONHOMES.COM

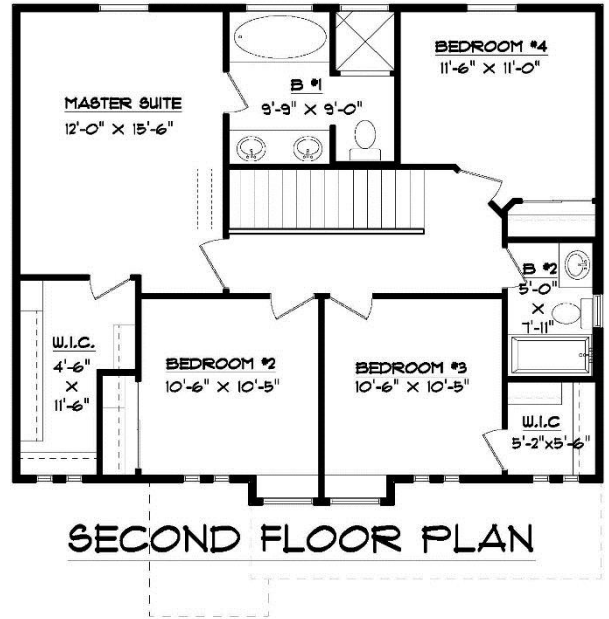
THE AVILLA II S



1630 SQFT. – 4 BEDROOMS – 2.5 BATHROOMS – 2 CAR GARAGE



FIRST FLOOR PLAN
34'-6" x 33'-8"



SECOND FLOOR PLAN

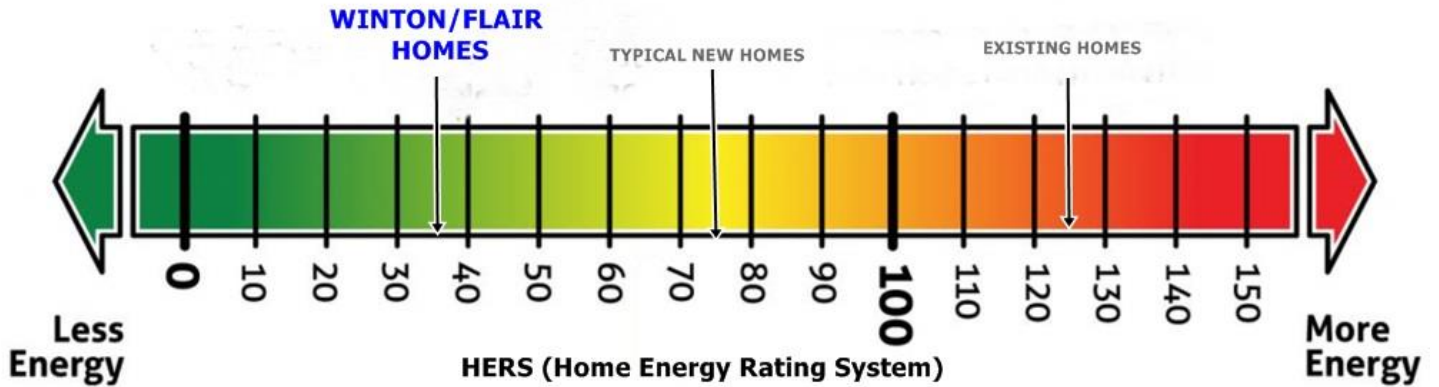
Floor Plan, Amenities, Price and Availability are subject to change without notice



•6300 Escondido Dr. El Paso, TX 79912 •PH: (915) 584-8629 •FX: (915) 225-0087
WINTONHOMES.COM



Energy Star Certified EFFICIENCY, COMFORT AND HEALTH



ALL ACCENT HOMES ARE DESIGNED AND BUILT WITH HIGH LEVELS OF ENERGY EFFICIENCY TO MEET AND EXCEED ENERGY STAR PROGRAM STANDARDS.

We not only build your dream home...
we build a cost-effective, healthy home
suited for any climate and the comfort
for you and your loved ones...

Jack Winton



*WE GUARRANTY HEATING & COOLING PERFORMANCE OF EACH HOME