

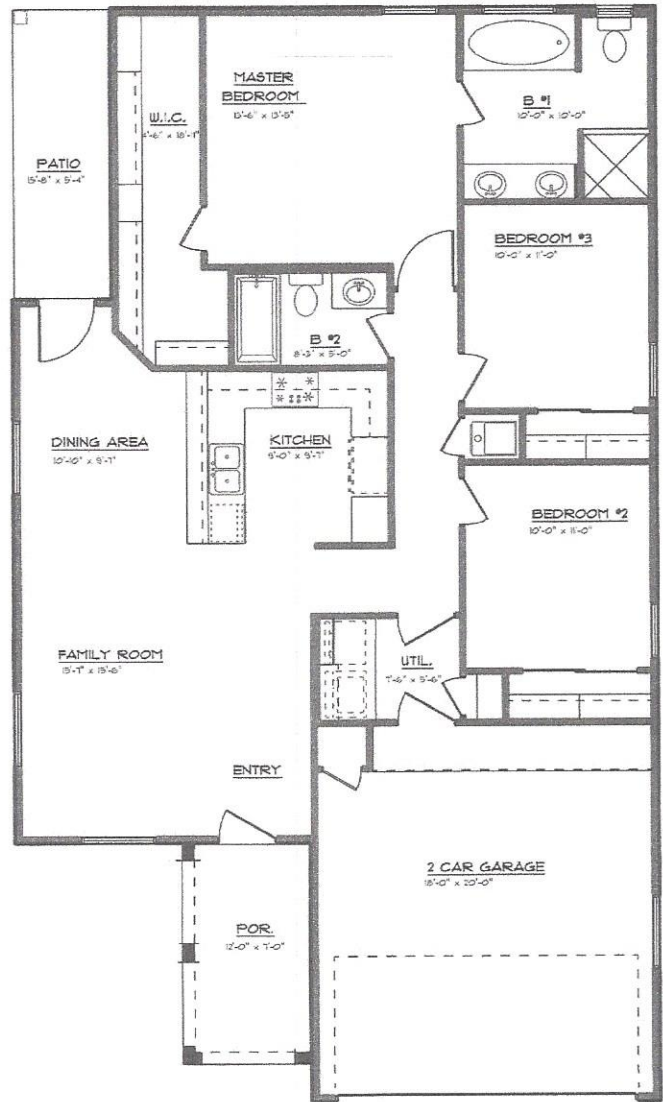
ACCENT HOMES INC.

LA ROMA III "S"

12064 Prairie Ridge St.

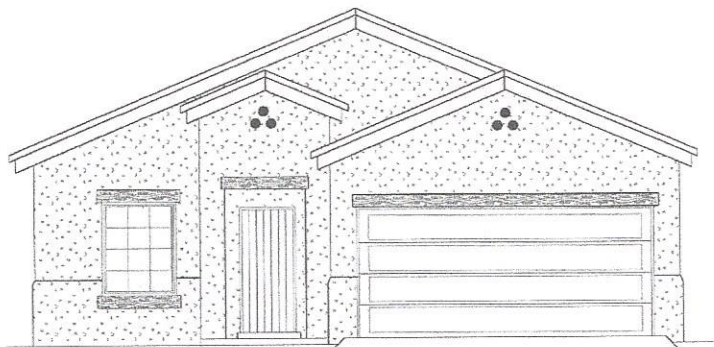
LIVING AREA 1370 SQ.FT.

- FAMILY ROOM
- DINING AREA
- KITCHEN
- UTIL. ROOM
- 3 BEDROOMS
- 2 BATHS
- 2 CAR GARAGE



FLOOR PLAN

34'-6" x 59'-0"



FRONT ELEVATION

DATE 4-25-16