

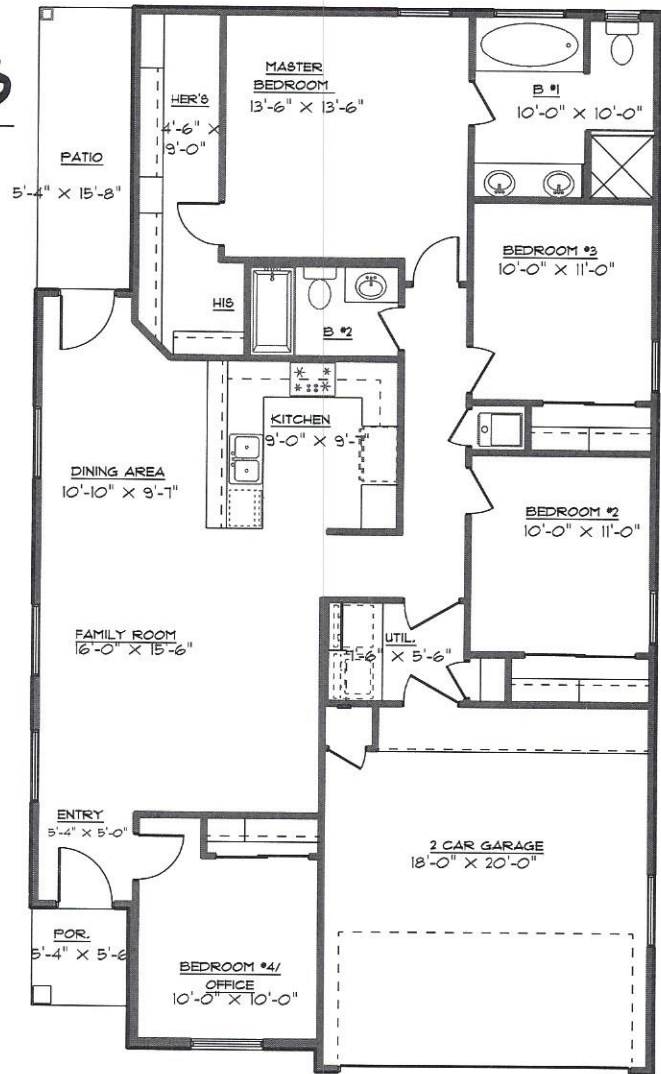
# ACCENT HOMES INC.

12056 PRAIRE RIDGE ST.

## THE ROMA IV S

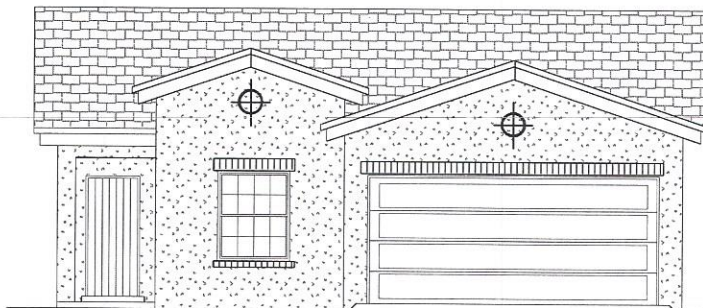
LIVING AREA 1522 SQ.FT.

- FAMILY ROOM
- KITCHEN
- DINING
- 4 BEDROOMS
- 2 BATHS
- BIG W.I.C.
- UTIL ROOM
- 2 CAR GARAGE



### FLOOR PLAN

W 34'-6" X D 59'-0"



FRONT ELEVATION