

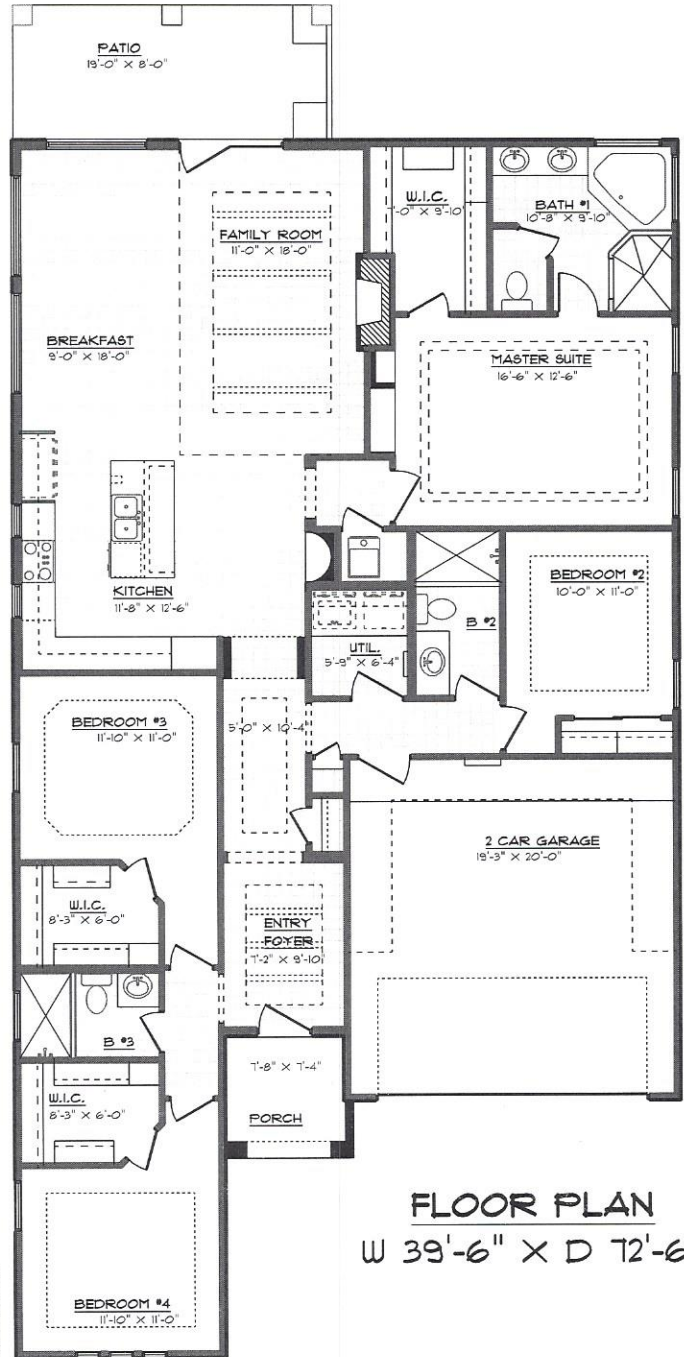
FLAIR HOMES INC.

THE ALAMO G

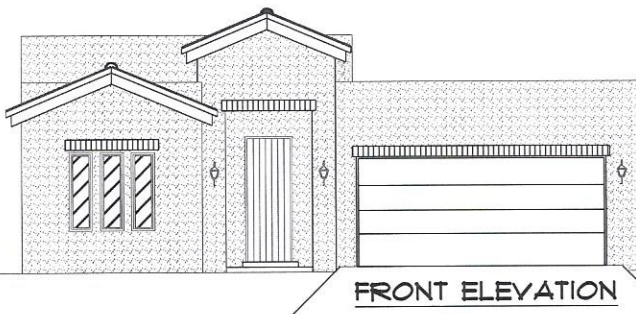
1660 TONANTZIN PL.

LIVING AREA 2046 SQ.FT.

- FAMILY ROOM
- KITCHEN
- BREAKFAST
- 4 BEDROOMS
- 3 BATHS
- BIG W.I.C.
- UTIL ROOM
- 2 CAR GARAGE



FLOOR PLAN
W 39'-6" X D 72'-6"



DATE 3-29-16