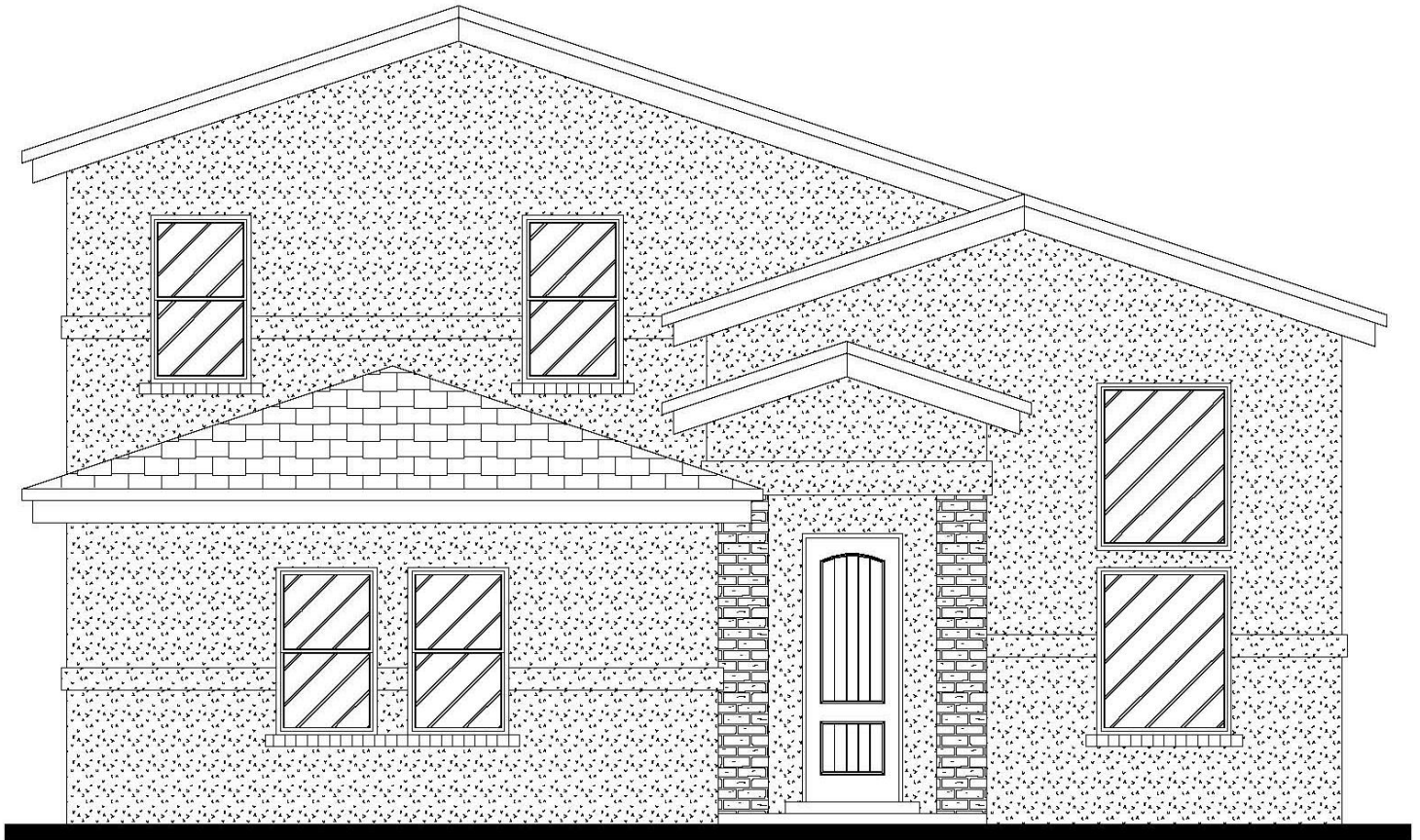


THE PINON



WINTON & ASSOCIATES
ACCENT SERIES HOMES

1733 SQFT. – 4 BEDROOMS – 2.5 BATHROOMS – 2 CAR GARAGE



FRONT ELEVATION

Build your dream home...



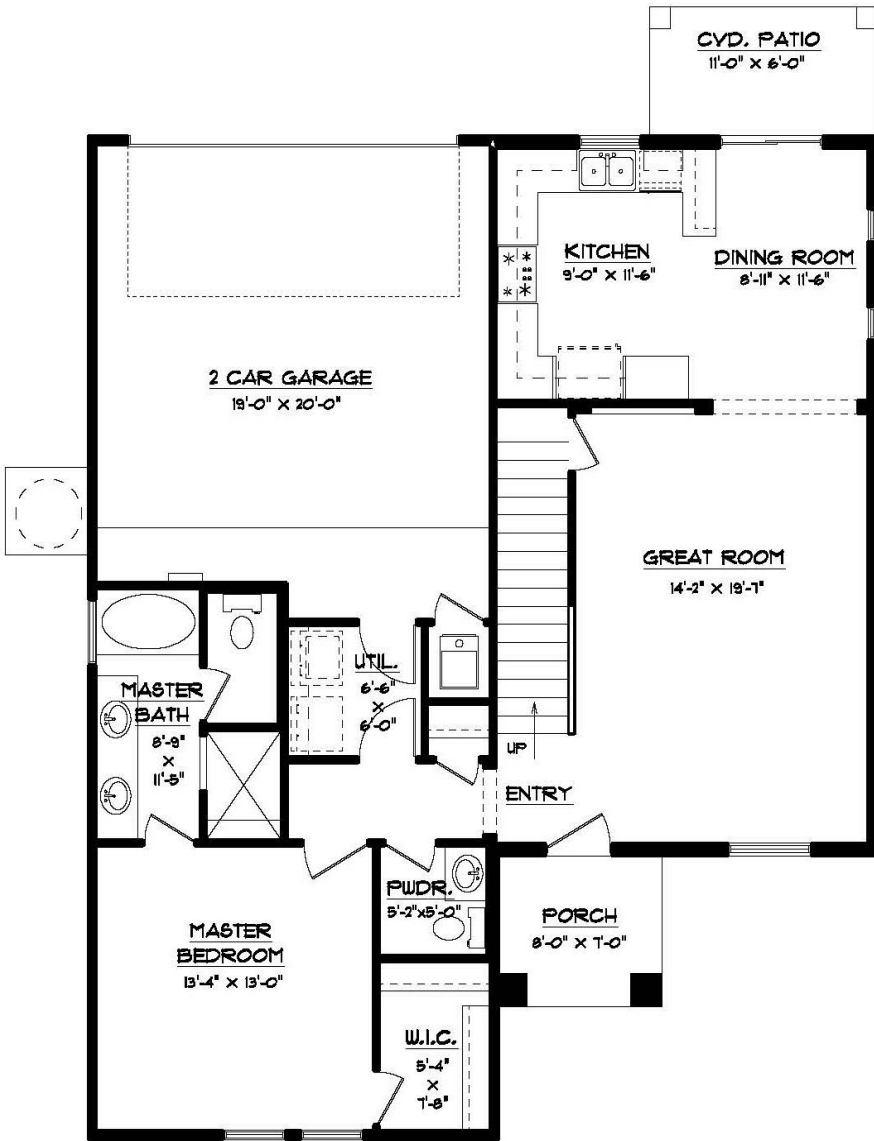
•6300 Escondido Dr. El Paso, TX 79912 •PH: (915) 584-8629 •FX: (915) 225-0087
ELPASOACCENTHOMES.COM

THE PINON



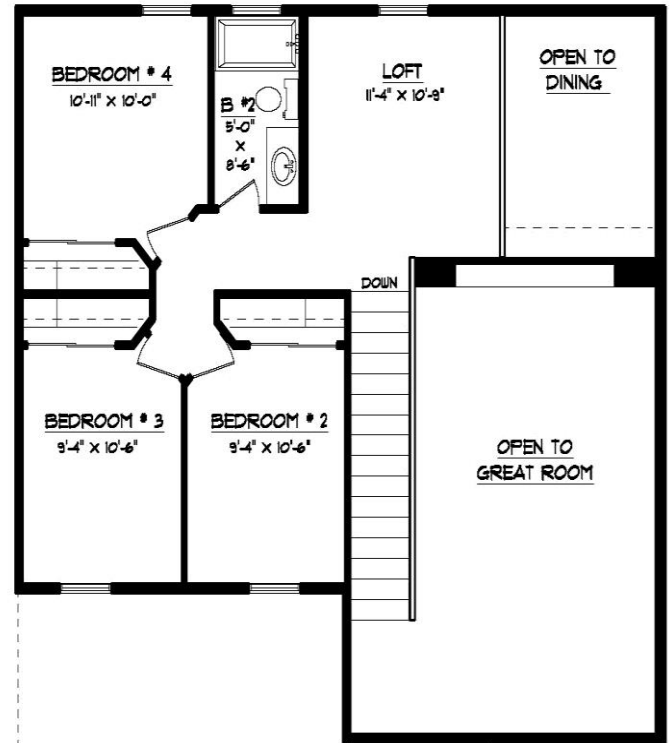
WINTON & ASSOCIATES
ACCENT SERIES HOMES

1733 SQFT. – 4 BEDROOMS – 2.5 BATHROOMS – 2 CAR GARAGE



FIRST FLOOR PLAN

38'-0" X 45'-7 1/2"



SECOND FLOOR PLAN

Floor Plan, Amenities, Price and Availability are subject to change without notice



•6300 Escondido Dr. El Paso, TX 79912 •PH: (915) 584-8629 •FX: (915) 225-0087
ELPASOACCENTHOMES.COM



Energy Star Certified EFFICIENCY, COMFORT AND HEALTH



ALL ACCENT HOMES ARE DESIGNED AND BUILT WITH HIGH LEVELS OF ENERGY EFFICIENCY TO MEET AND EXCEED ENERGY STAR PROGRAM STANDARDS.

We not only build your dream home...
we build a cost-effective, healthy home
suited for any climate and the comfort
for you and your loved ones...

Jack Winton



WINTON & ASSOCIATES
ACCENT SERIES HOMES

*WE GUARRANTY HEATING & COOLING PERFORMANCE OF EACH HOME